

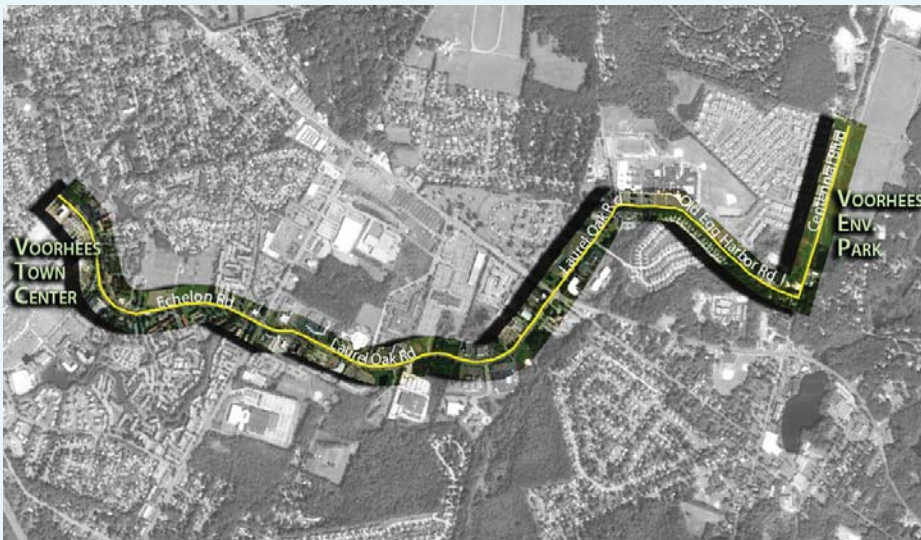


The Voorhees Township East-West Bikeway Connector Study



Voorhees Municipal Town Hall
2400 Voorhees Town Center (Next to Macy's)
2nd Floor Courtroom

THE STUDY AREA



Voorhees residents, bicyclists, business owners and their employees are invited to this forum to learn more about a study dedicated towards:

- Creating a safe bicycle and pedestrian linkage between the Voorhees Town Center and the future site of the Voorhees Environmental Park.
- Making improvements along Centennial Blvd. to create a safe, attractive and environmentally sustainable gateway into the future Voorhees Environmental Park.

Public forum participants will:

- Engage with project planners in face to face discussions
- Learn about possibilities available to improve biking and walking in the study area
- See the vision for the Voorhees Environmental Park on Centennial Blvd.
- Visit www.bikeplan.org/voorhees for more information regarding this project



This study is being funded by the Federal Highway Administration (FHWA) through the Delaware Valley Regional Planning Commission's (DVRPC) Transportation and Community Development Initiative (TCDI) Program. For questions regarding this project and public meeting please contact Cross County Connection at 856-596-8228.